

# Oakwood Primary School

## Newsletter



Friday 31st January 2025

Dear Oakwood Community,

The term is well underway and we have been very busy as usual! In addition to all of our day to day learning, the past fortnight has seen additional activities such as the No Such Thing as Normal Day last Monday and our visit from local author, Ian Brown, yesterday.

On Wednesday, Mrs Thompson held a "Headteacher Q & A" assembly for KS1, LKS2 and UKS2. Children had the opportunity to ask Mrs Thompson some questions about her job and plans for Oakwood. As usual, the children asked some excellent questions, and these, along with the answers, will be published to the website very soon.

### Staffing updates:

Last week we said goodbye to Mrs Rhodes (LKS2 Teaching Assistant) and we would like to wish her all the best. This week, we have welcomed Mrs Chan (KS1 Teaching Assistant) and we have appointed an additional Teaching Assistant for LKS2 who will join us in due course.

We hope you all have a lovely weekend.  
The Oakwood Team

### OPAL parent observation

In September, our **Oakwood OPAL parent play champion** visited the school to observe play at lunchtime. The report from this visit is now available on the website here:

<https://www.oakwood.herts.sch.uk/outdoor-play-and-learning-opal/>

An extract from the report is copied below:

*There was an impressive amount of physical activity taking place, from ball games on every pitch, to gymnastics, groups running around the track, play equipment being used for climbing and swinging and games of chase. There were also children who were playing quieter games or remained in one area and some places where children were sitting on benches chatting. It was encouraging to see that children were able to find a space that suited the way in which they wanted to play and relax. There were high levels of wellbeing and involvement. The noises across the site were full of laughter, giggles, bursts of 'spontaneous glee'*

We would like to thank Mrs Hogarth for the time and support she has given to the OPAL project.

### Recommended reading...

We value reading and see it as the gateway to knowledge and one of life's key pleasures!

#### Reception

*Dare We Be Dragons?*  
By Barry Falls



#### Key Stage 1

*Dino Dad*  
By Andy Day

#### Lower Key Stage 2

*Guardians of the New Moon: Ming and Miaow's Great Race*  
By Eric Huang



#### Upper Key Stage 2

*Time Travellers: Adventure Calling*  
By Sufiya Ahmed



Please do visit your [local library](#) to select from a fantastic range of books.

### Important dates for your diary...

W/C 3 <sup>rd</sup> February	SEND support plan meetings
Tuesday 4 <sup>th</sup> February	Year 3 Speedstacking competition
Tuesday 4 <sup>th</sup> February	LKS2 neurodiversity workshop
Tuesday 4 <sup>th</sup> February	Open Classrooms 3:30pm-4:45pm
Friday 7 <sup>th</sup> February	Music workshop at St Albans School
Tuesday 11 <sup>th</sup> February	LKS2 recorder performances
Wednesday 12 <sup>th</sup> February	Online Parent/Teacher consultations
Thursday 13 <sup>th</sup> February	Face-to-face Parent/Teacher consultations
W/C Monday 17 <sup>th</sup> February	Half Term – School Closed
Monday 24 <sup>th</sup> February	Pupils return to school

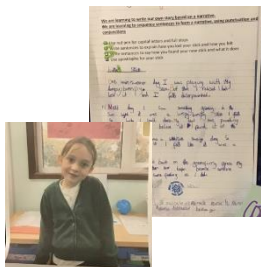
Our school website address: [www.oakwood.herts.sch.uk](http://www.oakwood.herts.sch.uk)

School contact details: [admin@oakwood.herts.sch.uk](mailto:admin@oakwood.herts.sch.uk)  
01727 753930

## Work of the week!

### Lisa in Cherry

Lisa has used wonderful writing techniques she has learned over the last two years to produce a magical story about a stick she found based on Stanley's Stick.



### Cassie in Lime

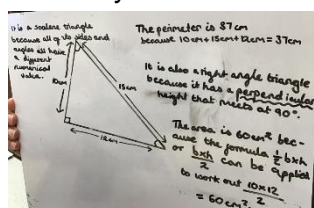
Cassie has shown excellent examples of expanded noun phrases and a technique called show not tell to create wonderful imagery for her reader.



## Learning around Oakwood: Sycamore

Sycamore Class have been enjoying learning about Space not only in our science topic but also through English writing and Art. The children wrote reports on recently discovered planets where they had the opportunity to use their imagination of what we might discover should a new planet be found. Some ideas contained rivers and mountains and all types of life forms described with detail and imagination. In science, we used toilet rolls to create a scale model of our solar system and we're staggered at the huge distances involved. If you look closely at our model, you will see the four Rocky planets are relatively close to the Sun but Neptune, the furthest planet from the sun, was right outside in the car park in our model. Staying on the space theme, we have explored the retro, futuristic style of art from the 1960s Space Race era. We have explored lots of colour mixing and paint techniques to use in our own retro futuristic compositions. Have a look at some of our work below

In Geography, we have moved a little closer to home as this term our unit concentrates upon the human Geography of our local area. We have been examining reasons why people settle choose to settle here in St Albans. Surveys have been completed and field work will shortly be undertaken.



## Curriculum celebration:

Through our PSHE curriculum, we believe we can enhance children's education and help them to become caring, respectful and confident individuals. It is our intent that all children will be lifelong learners with the confidence and ability to develop their skills and understanding when having new experiences, meeting new challenges and finding themselves in unfamiliar situations. Most importantly, we want to prepare our children for life in modern Britain and to make sure the children we teach learn to be happy, healthy and safe.

Our current learning is around the theme 'Dreams and Goals'. All year groups from Reception to Year 6 are exploring this theme in a way that is appropriate to their stage of development. For instance, in Reception, we have been thinking of things that we find challenging. Things like writing letters the correct way, building a tall Jenga tower and learning to ride a bike without stabilisers. In Years 5 and 6, the children have been setting themselves goals to achieve, learning strategies to cope when things don't go to plan and about intrinsic and extrinsic motivators.

The vocabulary that is repeated and reinforced throughout the theme at all ages is perseverance, challenge, resilience, motivation, success and achievement.

PSHE is not just learnt within the classroom, good PSHE Education is a partnership between home and school. Here are a few ideas of ways you can support your child in this area of the curriculum at home:

- From a young age, encourage your child to dress and undress independently and manage their own hygiene, such as by washing hands after using the toilet.
- Encourage your child to help you plan and cook healthy recipes. Take them shopping and involve them in decision making.
- Make time for simple activities such as board games to encourage teamwork and help children learn to take turns.
- With older children, use documentaries and other media to discuss issues around our place and responsibilities in society.
- Talk about and practice e-safety.
- We all make mistakes sometimes. When your child does something wrong, supportively help them reflect on their behaviour and think of how they could have handled the situation instead.
- Give plenty of positive encouragement and praise to build self-esteem.

If you have any safeguarding concerns, including concerns about bullying, please email [safeguardingteam@oakwood.herts.sch.uk](mailto:safeguardingteam@oakwood.herts.sch.uk)  
For urgent concerns, please telephone the school office

## Learning around Oakwood: Beech

In Geography, Beech have been busy this term comparing and contrasting a country on the equator with the UK. We have been improving our mapping skills to find out where the equator is located and learning facts about Quito, the capital city of Ecuador and how it compares to our capital city London. We then used team work to write down what we had found out to make posters.

We have also been using our mapping skills to explore the Polar regions in Science. We found out that the poles are the furthest away from the equator, meaning they are very cold. We explored what materials explorers would need to wear to keep warm on expeditions and performed our own experiment to come to our own conclusions. Ask your child what activities we tested to check which gloves were the best!



## School Travel Plan

You will have noticed a standing item in our newsletters regarding safety around the school site at high volume traffic times of the day. Following meetings with parents in the Autumn Term, the school have since been exploring a number of ways we can promote safer and more sustainable travel for our community to arrive at and depart from the school site.

The school has begun work on a School Travel Plan in conjunction with Herts County Council. This will involve some initiatives and workshops for the children over the coming months and years. You may also have noticed representatives from the council outside the school site on Wednesday morning this week assessing the road against criteria for a school crossing patrol. We will of course keep you updated on any future developments.

## Celebration Assembly

Every week, Celebration Assemblies are held to mark children's successes, efforts and achievement individually and as a class. In the last two weeks, the following prizes were awarded to...



'Golden Dustpan and Brush' for the tidiest classroom – Maple and Rowan



'Golden Clock' for the class with the best attendance and punctuality – Lime and Cherry



'Golden Knife and Fork' for the best manners in the hall at lunchtime – Rowan and Willow



The 'Golden Toilet' for the cleanest and most looked after class toilets – Beech and Acorns 1

'Person of the Week' for demonstrating values which are important to everyone in our school:

Ash – Bonnie and Teo  
Beech – Blake and Leonard  
Cherry – Nathan and Leo  
Lime – Scott and Jessie  
Maple – Bella and Jolie  
Poplar – Rosa and Tahj  
Rowan – Gabriella and Curtis  
Sycamore – Karson and Heidi  
Willow – Tygar and Emma



## Community News

Food banks can provide families with long-life food items such as tinned goods, pasta, flour, washing powder, hygiene and baby products such as nappies.

Our local food banks operate on a voucher referral system. These can be obtained from various places such as GPs and Citizens Advice. We are also able to refer and provide food bank vouchers to families who may need them.

If this is something that might help your family, you can contact Miss Stubbs directly at [senco@oakwood.herts.sch.uk](mailto:senco@oakwood.herts.sch.uk) for more information or to obtain a voucher.

Please remember if you have any queries or questions, do make an appointment to come and speak your child's teacher. We are always very happy to meet with you. Don't let a little worry become a big one!